



SUMERTITM
INDUSTRIES PRIVATE LIMITED
(AN ISO 9001: 2015)

**EOT CRANE MANUFACTURER &
INFRASTRUCTURE BASED COMPANY**

SIPL Group (Faridabad-NCR)

Introduction-

Sumerti Industries Private Limited-Deals In- Infra Engineering Projects, All Type of Structural and Stainless Steel Works-Fabrication & Erection and Material Handling Systems Like EOT Cranes. We are an ISO 9001:2015 certified company and registered under MSME. Specifically, M/s. SUMERTI INDUSTRIES PRIVATE LIMITED expertise consists of-

•Division-1:

Design, Manufacturing, Supply and Exporting of EOT Cranes, HOT Cranes, Heavy Duty WRH, Chain Electric Hoist, Chain Pulley Block, JIB Cranes Pillar and Wall Mounted, Goliath Cranes, Gantry Cranes, Goods Cum Passenger Lift, Freight Elevators, Electromagnets, etc. with complete installation.

•Division-2:

Design, Manufacturing and Supply of All Type of Structural and Stainless Steel work-Fabrication & Erection (In-house & projects based site works with complete package), Power Plant Platforms, Pipe Rack Structures, Shed over Gas filling stations, Railway Project Works-Foot Over Bridges, Height Gauges, Roofing Sheds etc, Tanks, Vessels, Pre-Engineering Building Works and other All kinds of Structural Work, catering the needs of Construction, Sugar, and other Process Industries. In-House Fabrication Capacity 250MT Per Months. Provision of another 500 MT per Months production.

•Division-3:

Infra Engineering Projects-Complete package work with Civil, Structural and Architectural Works. Project based works like Building Construction, RCC Structures, PCC, IPS Flooring, Earth Work, Structural Fabrications & Erection, Application of Roof Water Proofing Treatments, Vineratex Coating, Side Cladding & Roof Deck Sheet, Fixing of Acid Alkali tiles, Fixing of Kota Stone , Granite, Floor and Wall Tiles, etc.

•We have in house facility of design, Mechanical as well as Structural for steel fabrication.

SIPL Group (Faridabad-NCR)

Vision

Known for becoming a leader in weightlifting and material handling industry and for a research-driven approach that is ultimately an industrial super.

Mission

Our ultimate objective is to become a “one-stop-shop” for customers to find solutions to their lifting and material related needs,

Quality

We are committed to meet customers needs on time & at all times through continous improvement in quality management system and innovative efforts.

Safety

Dafety first, last and everywhere. Safety is highly valued as being first foundation of our material handling industry.

Quality Centric Approach

Maintaining productivity, training whenever required, reducing wastage and customer satisfaction in terms of delivery and quality.

Ethics

Ethical, leagal and social ethics guide us from day to day and we pride ourselves that we strictly adhere to “good ways of doing business.

Innovation

We aim to be a leader in industry. Continually bringing in new processes & technological development helps us to grow & contribute to the industrial development of India.

Director's Message



R K Singh
Director



Kishan Dagar
Director

Director's Message

As a comprehensive manufacturer of material handling systems like Over Head Cranes known as EOT Cranes, Hot Cranes, JIB Cranes , Goliath cranes etc. has been supplying a wide variety of products to our customers in numerous fields, mainly in Furnace industry ,Manufacturing Industry, Production Industry etc and also in construction services like construction and manufacturing of Foot Over Bridges, Pre Engineering building works , etc and also in workshop Fabrication-Heavy Fabrication, Medium Fabrication & Light Fabrication, fabrication of power plant structures, conveyors fabrication, sheet metal fabrication including other site fabrication and erection projects and much more. Since early in our company history, we have established a unified all in one in house production facilities where we perform everything from design to manufacturing ourselves. As such, we have been able to speedily provide products that meet the expectations and requests of the customer by the company working as a whole. We have constantly been a leader in our industry, for example , by introducing new technologies day by day facilities and constantly expanding and strengthening our infra structure and facilities. However, I believe the most important assets etc, it the relationship of trust that we have established for over more than many years with our customers, agents and distributors.

Our commitment to innovation and excellence invariably results in delivering early completion of projects undertaken; we understand and promote the ideas of working as o partnership with our client to ensure their goals are met in budgeted time and costs. SIPL has to its credit having executed several projects in construction of Foot Over Bridge in Indian Railways, constructions works including architectural works, workshop fabrication and erection/Launching works. Manufacturing is currently greatly shifting towards globalization, with many companies establishing factories and stores, hanging their hopes of staying in business and further developing on the global market. In anticipation of a increasing expanding needs of production sites and local procurement by customers expanding their sales, manufacturing , contracting services etc network overseas and to provide local supports , SIPL is currently advancing with establishing its manufacturing and production sites etc. we undertake a variety of projects for a wide range of clientele-from small private developments to Government projects. Our Unique and flexible projects management systems ensure that a positive outcome is achieved regardless of size or nature of projects.

Going forward, we will continue to passionately engage in world-leading technology and manufacturing as a global manufacture while keeping in hears our philosophy of being in 'pursuit of limitless advance,' a philosophy that we have kept since our foundation, and to continue to move forward with our customers.

Overcoming challenge after challenge with the support of our brilliant team work, We have been successful in bringing SIPL to a new milestone of global recognition.

Warm Regards

Mangement
(Director's)

Our Products

We are involved in Design, Manufacturing, Supply and Exporting of-

- EOT Cranes,
- HOT Cranes,
- Heavy Duty WRH,
- Chain Electric Hoist,
- Chain Pulley Block,
- JIB Cranes Pillar Mounted
- JIB Cranes Wall Mounted
- Goliath Cranes,
- Gantry Cranes,
- Goods cum Passenger Lift,
- Freight Elevators,
- Electromagnets etc.



Our Products



FLOOR MOUNTED JIB CRANE



TROLLEY ASSEMBLY



CONTROL PANEL



EOT - DOUBLE GIRDER 5TON



JIB CRANE - LOAD TEST



EOT - ASSEMBLY



EOT - MANUFACTURING VIEW



EOT - PARKING SINGLE GIRDER



EOT CRANE - SINGLE GIRDER



EOT - MANUFACTURING VIEW



EOT CRANE - INSTALLATION & COMMISSIONED



EOT CRANE - UNDER DISPATCH



EOT CRANE - UNDER DISPATCH



EOT CRANE - PLANT VIEW

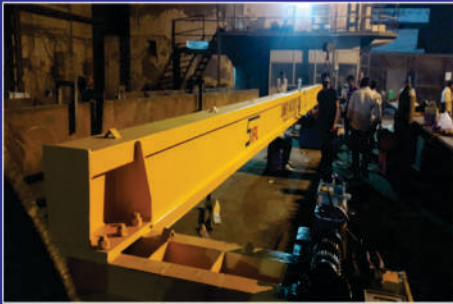


EOT CRANE - DOUBLE GIRDER COMMISSIONED

Our Products



Our Products



EOT CRANE - 5 TON UNDER INSPECTION



JIB CRANE - UNDER TESTING



JIB CRANE - UNDER INSTALLATION



GANTRY CRANE - SINGLE GIRDER



EOT CRANE - MANUFACTURING VIEW



EOT CRANE - SINGLE GIRDER - UNDER TESTING



EOT CRANE - SINGLE GIRDER - UNDER TESTING



SEMI GOLIATH CRANE - SINGLE GIRDER



ELECTRIC HOIST



EOT CRANE - UNDER DISPATCH



EOT CRANE - READY TO DISPATCH



EOT CRANE - NEWLY COMMISSIONED



EOT CRANE - DOUBLE GIRDER - ERECTION AT SITE



EOT CRANE - UNDER INSPECTION



EOT CRANE - DOUBLE GIRDER COMMISSIONED

Manufacturing Process

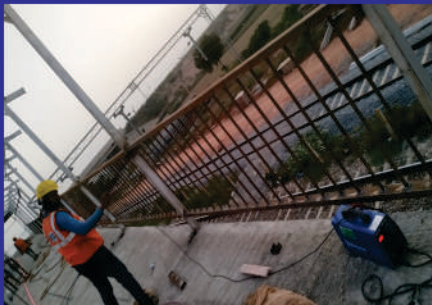


Services :

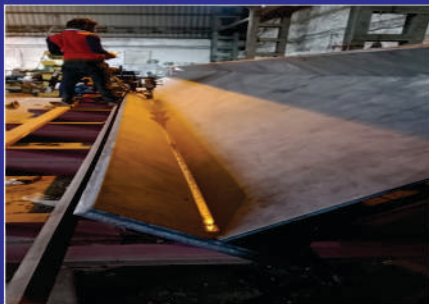
- Infra Engineering Projects
- Workshop Heavy Fabrication
- Site Erection & Commissioning



Site Erection & Installation

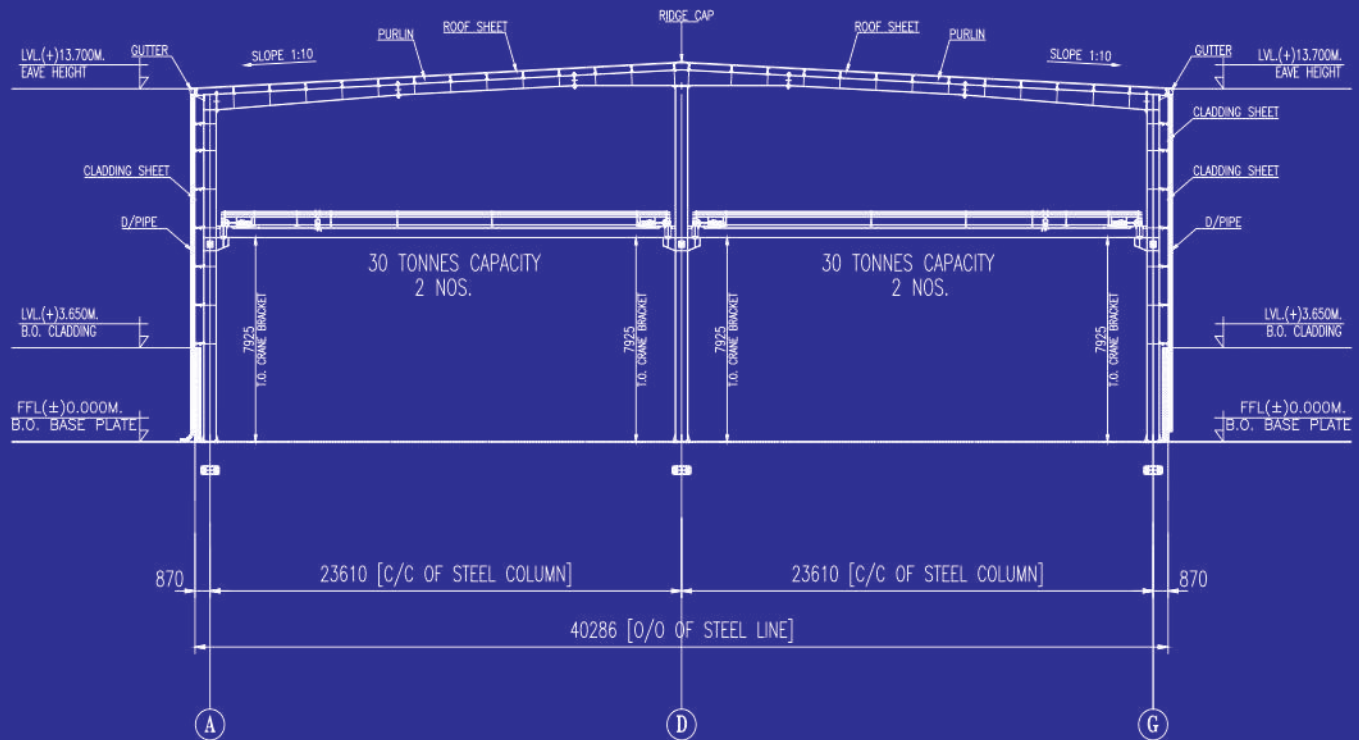


Workshop Heavy Fabrication

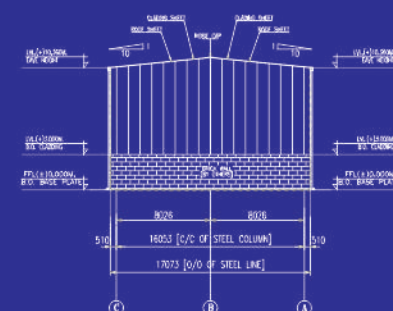
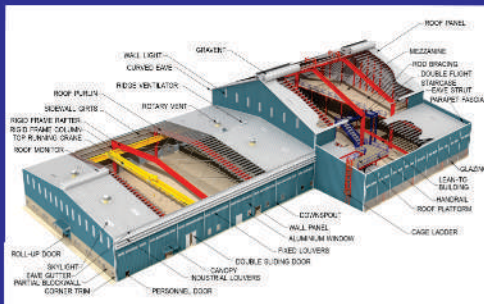


Pre Engineering Building Works

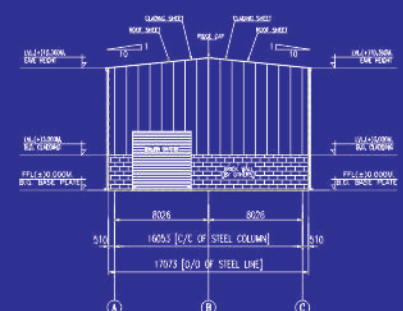




MAIN FRAME SECTION



END WALL ELEVATION ALONG GRID-1



END WALL ELEVATION ALONG GRID-4

Plant Facilities

- CNC Plasma Cutting Machine
- CNC Oxy Fuel
- Pug Cutting Machine
- Hack Saw Machine
- Submerged Arc Welding Machine
- MIG-TIG Welding Machine

- Lathe Machine
- Radial Drill Machine
- M1TR Machine
- Plate Rolling Machine
- Hobbing Machine
- Testing Equipments

2022

JANUARY

S	M	T	W	T	F	S
						1
2	3	4	5	6	7	8
9	10	11	12	13	14	15
16	17	18	19	20	21	22
23	24	25	26	27	28	29
30	31					

FEBRUARY

S	M	T	W	T	F	S
		1	2	3	4	5
6	7	8	9	10	11	12
13	14	15	16	17	18	19
20	21	22	23	24	25	26
27	28					

MARCH

S	M	T	W	T	F	S
		1	2	3	4	5
6	7	8	9	10	11	12
13	14	15	16	17	18	19
20	21	22	23	24	25	26
27	28	29	30	31		

APRIL

S	M	T	W	T	F	S
					1	2
3	4	5	6	7	8	9
10	11	12	13	14	15	16
17	18	19	20	21	22	23
24	25	26	27	28	29	30

MAY

S	M	T	W	T	F	S
1	2	3	4	5	6	7
8	9	10	11	12	13	14
15	16	17	18	19	20	21
22	23	24	25	26	27	28
29	30	31				

JUNE

S	M	T	W	T	F	S
			1	2	3	4
5	6	7	8	9	10	11
12	13	14	15	16	17	18
19	20	21	22	23	24	25
26	27	28	29	30		

JULY

S	M	T	W	T	F	S
					1	2
3	4	5	6	7	8	9
10	11	12	13	14	15	16
17	18	19	20	21	22	23
24	25	26	27	28	29	30
31						

AUGUST

S	M	T	W	T	F	S
	1	2	3	4	5	6
7	8	9	10	11	12	13
14	15	16	17	18	19	20
21	22	23	24	25	26	27
28	29	30	31			

SEPTEMBER

S	M	T	W	T	F	S
				1	2	3
4	5	6	7	8	9	10
11	12	13	14	15	16	17
18	19	20	21	22	23	24
25	26	27	28	29	30	

OCTOBER

S	M	T	W	T	F	S
						1
2	3	4	5	6	7	8
9	10	11	12	13	14	15
16	17	18	19	20	21	22
23	24	25	26	27	28	29
30	31					

NOVEMBER

S	M	T	W	T	F	S
		1	2	3	4	5
6	7	8	9	10	11	12
13	14	15	16	17	18	19
20	21	22	23	24	25	26
27	28	29	30			

DECEMBER

S	M	T	W	T	F	S
				1	2	3
4	5	6	7	8	9	10
11	12	13	14	15	16	17
18	19	20	21	22	23	24
25	26	27	28	29	30	31

Mfg. Exporter of :

**EOT Cranes, Goliath Cranes, HOT Cranes, JIB Cranes,
Electric Hoists, Electro Magnets, Goods Lift etc.**

Deals in :

**Structural Work Fabrication & Erection
(In-House as well Site Project Based) : Heavy Fabrication,
Light Fabrication, Medium Fabrication, Infra Engineering**

***Projects :* Civil & Architectural Work with Complete Package**

Contact Us :

Crane Division

E-mail : sales@sumerti.com

Mobile : +91-7053774699

**Workshop Heavy Fabrication & Infra Engineering Projects :
Civil, Architectural & Structural Works**

E-mail : info@sumertiindustries.com

Mobile : +91-8006143554

**Regd. Office & Works : Plot No.57, Sector-57 Industrial Area, Ballabgarh,
Faridabad - 121004 (Haryana) INDIA**

www.sumertiindustries.com